

# GTS ANGUS SUMMARY FALL 2007

## Using GTS in Sire Selection

### GTS ALLOWS BREEDERS TO MAKE THE MOST INFORMED BREEDING DECISIONS IN THE INDUSTRY.

The ABS GTS (Genetic Type Summary) program accurately and objectively describes physical trait differences for individual sires' progeny. By using the STAs (Standardized Transmitting Abilities) beef breeders can anticipate the type, or physical characteristics, that a bull will transmit to his offspring. STAs for each trait are calculated using herdmate comparisons on large numbers of a sire's progeny using a linear evaluation system.

These linear proofs are computed using statistical procedures similar to those used to calculate EPDs. STAs indicate how bulls compare for each trait included in the evaluation.

STAs also allow breeders to determine where a bull ranks within a given population for each trait. A bull with an STA of 0.0 is average for that trait, compared to all other bulls evaluated. For any given trait, the majority of the STAs on all bulls evaluated will be near 0.0. In fact, approximately 68 percent of the sires' STAs should fall between -1.0 and +1.0 with over 99 percent between -3.0 and +3.0. Keep in mind that the population dealt within these GTS analyses is not the entire breed, but a relatively select group of animals that are predominantly A.I. sired.

This chart illustrates the STA range and the description of the traits relative to the STAs. It also shows the percentage of the bull population that scores in that STA range.

2005 GTS Data	STA	#HEAD	-2	-1	0	+1	+2
Stature	-0.6	1221			■		
Capacity	+0.8	1221				■	
Body Length	+0.7	1221				■	
Muscling	+0.9	1221				■	
Rear Legs	-0.2	1221		■			
Feet & Pasterns	+0.8	1221				■	
Femininity	+1.1	760				■	
Udder Attachment	+3.1	243					■
Udder Depth	+2.2	243					■
Teat Size	+3.9	243					■

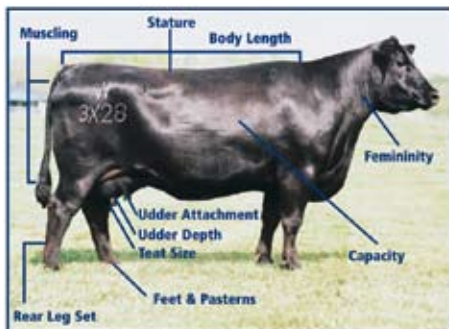
Comments: Reduced frame; Added capacity & body length; Heavy muscled; Strong feet & pasterns; Outstanding teat & udder quality

### READING THE INFORMATION INDIVIDUAL SIRES

For example, 29AN1413 EXT's STA for muscle is +0.9. This indicates that he sires progeny that are heavier muscled than nearly 84% of the sires evaluated, as can be seen by referring back to the GTS Distribution Range chart.

The number of progeny evaluated is provided in the GTS charts to give breeders an estimate of the reliability of the STAs. The higher the number of progeny evaluated, the greater the reliability of the STAs. For some sires, a Pedigree Estimate (PE) will be given. This indicates that the bull's STAs are based on the STAs of his sire and maternal grandsire, not his progeny.

**New, updated GTS information will be available beginning October 15 on the ABS website.**



### GENETIC TYPE SUMMARY

An objective linear evaluation of a bull's transmitting ability for various physical traits.

GTS describes differences between bulls' progeny and does not attempt to classify cattle based on an ideal animal.

**STA** (Standard Transmitting Ability) - A standardized measure of a sire's transmitting ability for a given trait.

STAs indicate how bulls compare, or relate to each other, for each trait included in the evaluation.

STAs also allow you to determine where a bull falls within a given population for each trait. A bull with an STA of 0.0 is average for that trait compared to all other bulls evaluated. For any given trait, the majority of the STAs on all bulls evaluated will be near 0.0. In fact, 68 percent of the sires' STAs should fall between -1.0 and +1.0, with 99 percent between -3.0 and +3.0.

**# Head (Progeny Number)** - Provides a measure of accuracy by indicating the number of a bull's progeny that have been evaluated for a given trait.

**Stature** - Evaluation of progeny frame size, based on hip height. Higher STA indicates taller size.

**Capacity** - Progeny evaluation combines depth of fore rib along with spring of rib and width of chest floor as well as depth of flank. Higher STA indicates larger capacity.

**Body Length** - Evaluation of progeny length from withers to pins. Higher STA indicates longer body length.

**Muscling** - Progeny evaluation combines width of rump and hindquarter, with secondary consideration given to forearm muscling. Higher STA indicates more muscling.

**Rear Leg Set** - Evaluation of progeny rear leg structure, with STAs near 0 being ideal. Higher STAs tend towards sickle hocked; lower STAs tend towards posty.

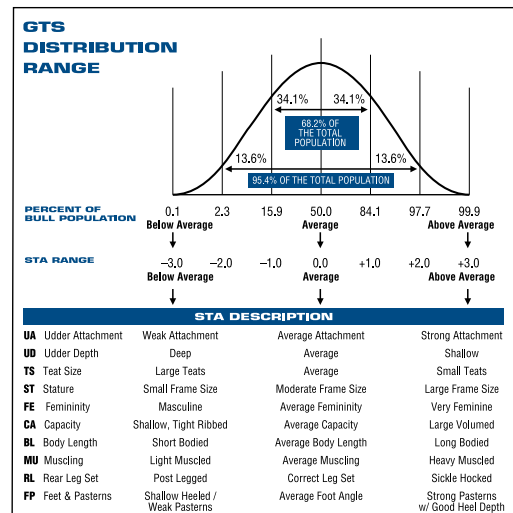
**Feet and Pasterns** - Evaluation of progeny length and strength of pastern and foot angle. Higher STA indicates stronger pastern with more depth of heel.

**Femininity** - Evaluation of daughters' angularity and their ability to carry condition without becoming coarse and masculine. Higher STA indicates more femininity.

**Udder Attachment** - Daughter evaluation combines fore udder attachment, rear udder height, rear udder width, and center support. Higher STA indicates stronger attachment.

**Udder Depth** - Evaluation of daughters' udder depth from top of fore udder to udder floor. Higher STA indicates higher, better supported udders.

**Teat Size** - Evaluation of daughters' teat size, including length and diameter. Higher STA indicates smaller teat size.



# Fall 2007 GTS ABS Angus Sires



NAAB Code	NAME	Stature	Feminity	Capacity	Body Length	Muscling	Rear Legs	Feet & Pasterns	Udder Attach	Udder Depth	Teat Size	Prog Body	Prog Fem	Prog Udder	Herds
AN1458	PFRED	0.8	-0.9	-0.3	1.0	0.1	-0.3	0.5	-0.5	-0.1	-0.5	181	105	22	16
AN1478	SAUGAHATCHEE	-0.1	0.5	1.1	0.6	1.8	-0.8	1.0	2.0	1.4	2.2	147	71	19	17
AN1501	602C	0.0	-2.2	1.6	-1.1	1.4	-0.1	0.5	1.7	1.4	1.9	427	179	119	32
AN1519	PLOWMAN	-0.6	-0.4	2.2	-0.3	2.6	-1.7	1.0	0.4	-0.1	-0.1	131	73	16	17
AN1520	N BAR PRIME TIME	-1.2	-0.8	0.3	-1.0	0.6	-0.2	0.0	1.1	1.7	2.5	71	39	14	7
AN1523	NEW DESIGN 878	0.2	-0.4	0.1	-0.1	0.8	-1.2	0.3	0.2	0.6	0.0	310	158	85	41
AN1524	TRAVELER 234D	0.5	1.5	-0.7	1.5	0.9	-0.2	-0.6	1.2	0.6	0.5	162	91	60	31
AN1530	POWER DESIGN	0.0	-1.2	0.9	-0.6	0.3	-1.9	0.3	0.6	0.7	0.7	56	13	PE	5
AN1532	EXT 4137	-0.6	1.0	0.4	0.1	0.8	-0.5	1.0	0.8	-0.7	1.8	51	35	32	3
AN1543	STRATEGY	-0.1	1.5	-0.3	0.5	-1.3	1.0	-0.2	0.9	0.4	-0.2	72	40	PE	10
AN1549	BUSHWACKER 944	0.2	-0.4	0.0	0.3	-0.2	0.8	-0.8				PE	PE	PE	1
AN1551	DESTINATION 928	0.8	-1.3	-0.8	1.2	-0.3	-0.1	0.2	0.0	0.0	-0.5	56	49	15	13
AN1556	LEAD ON	0.0	0.1	0.1	0.2	1.0	0.0	0.7	0.4	1.5	1.0	173	95	38	29
AN1558	RELIANT	-0.4	-1.0	1.8	-1.4	0.4	-0.4	-0.1	1.5	0.7	1.4	43	12	PE	4
AN1561	LOAD UP	-0.8	-0.2	1.8	-1.9	1.3	-0.7	0.5				24	14		6
AN1567	MODERN DESIGN	-0.4	1.7	0.4	-0.3	1.1	1.7	-1.2	0.5	0.5	0.5	43	41	PE	4
AN1569	BANDWIDTH	-0.5	-1.5	1.6	-1.2	1.7	-2.1	2.4	0.2	-0.1	0.4	37	30	PE	3
AN1574	OBJECTIVE	-0.3	1.6	1.2	-0.8	-0.6	1.3	1.3				85	37		9
AN1577	EXTRA H6	-1.0	0.3	0.3	-0.1	-0.2	-0.3	0.6	1.5	1.2	2.6	69	36	47	8
AN1585	SOMETHING SPECIAL	-0.5	0.5	-0.1	0.1	-0.4	0.8	-0.2				PE	PE	PE	1
AN1586	HIGHMARK	-0.7	0.6	-0.2	0.0	-0.3	-0.2	0.5	0.6	0.6	0.9	11	1	PE	3
AN1587	EXACTLY 1912	-1.1	-0.2	-0.1	-1.8	-0.8	-0.9	0.9	-0.1	-0.3	0.5	48	47	PE	6
AN1589	FORESIGHT	-1.0	-1.0	1.2	-1.5	1.1	-1.0	1.6	0.7	-0.2	1.0	132	90	13	9
AN1593	NEW DESIGN 9150	1.1	2.7	-2.5	1.9	-1.4	2.7	-1.3	1.7	1.5	1.3	81	78	23	7
AN1596	IDEAL 7451	-0.5	0.8	1.8	-0.2	0.4	2.9	-1.7	-0.1	0.0	0.3	101	45	31	6
AN1597	RITO PRIME	-0.6	-0.3	0.1	-0.1	-0.2	-0.4	0.3	1.7	1.4	1.6	33	33	PE	3
AN1608	ANALYST	-1.8	-0.5	1.3	-1.8	1.0	0.4	-1.1	0.4	-0.4	0.2	30	0	PE	1
AN1609	NEW STANDARD	-0.2	-0.6	0.6	-1.4	-0.1	-0.3	0.1				13	0		1
AN1616	NEW LEVEL	0.9	2.3	-0.5	0.8	0.0	2.9	-2.9	0.8	0.0	-0.3	144	88	40	19
AN1618	PRIME CUT 0145	-1.2	1.1	0.5	-1.9	0.7	-0.1	-1.0	-0.1	-0.1	0.7	45	29	11	7
AN1619	MORGANS DIRECTION	-1.4	-0.7	-1.8	-1.1	1.0	-3.0	-0.3	0.1	0.5	0.8	77	10	PE	5
AN1620	4 POINT 8	0.4	0.7	-2.0	-0.1	-0.2	-3.7	-0.5				38	7		4
AN1621	COALITION	0.4	-0.7	0.7	0.4	-0.2	0.6	0.7	1.5	0.6	1.2	60	10	PE	10
AN1623	ALLIANCE I87	-1.3	0.0	2.5	-2.4	2.3	0.1	-0.8	1.8	0.9	1.8	87	58	PE	6
AN1624	BANDO 0699	0.8	1.1	0.2	1.2	0.8	-1.2	0.4	0.3	-0.1	0.6	20	10	PE	5
AN1625	SAFE LEAD	-1.6	0.8	0.4	-2.3	0.6	-1.0	1.7	0.2	0.8	0.4	19	18	PE	2
AN1627	CONNECTION X15	0.5	0.2	-0.6	0.4	0.2	-1.7	2.0	-0.7	0.2	0.1	15	15	PE	1
AN1633	SHEAR FORCE	-0.6	1.1	1.1	1.4	1.7	-0.7	1.4	0.7	0.8	1.2	31	23	PE	5
AN1634	INNOVATOR	0.1	0.3	-2.7	0.5	-0.8	-3.0	1.2				13	13		2
AN1636	MAGNITUDE	-0.4	0.2	0.2	0.0	0.4	-0.1	0.3				PE	PE	PE	2
AN1637	RITO RITO	-0.4	0.6	-0.3	-0.6	-0.5	0.2	1.1				PE	PE	PE	0
AN1639	OPEN RANGE	-2.6	0.8	3.5	-4.2	0.1	0.7	-0.4	1.7	1.4	1.6	21	21	PE	2
AN1640	IN FOCUS	-1.1	-2.3	2.6	-1.6	1.2	-0.8	1.0	1.1	0.6	0.0	111	94	PE	16
AN1641	PRECISION 1023	-1.1	0.8	-0.3	-0.8	1.3	0.0	0.3	0.5	0.2	0.8	48	30	PE	4
AN1642	IMAGE MAKER	-0.1	-1.2	0.9	3.5	0.4	-2.0	1.2	0.4	-0.4	0.8	77	75	22	7
AN1644	EXTRA K205	0.2	0.5	-0.6	2.9	0.5	0.0	-0.1	0.7	0.6	1.3	75	41	14	4
AN1645	FREIGHTLINER 2096	-0.8	0.0	1.1	-0.6	0.7	-0.4	0.1	1.1	0.5	0.8	PE	PE	PE	2
AN1646	POUNDMAKER	0.1	-0.5	0.1	0.2	0.3	0.3	-0.3	1.2	0.5	0.9	17	17	PE	2

# Fall 2007 GTS ABS Angus Sires



NAAB Code	NAME	Stature	Feminity	Capacity	Body Length	Muscling	Rear Legs	Feet & Pasterns	Udder Attach	Udder Depth	Teat Size	Prog Body	Prog Fem	Prog Udder	Herds
AN1648	INITIATIVE	-0.1	0.4	0.3	0.1	0.4	-0.7	-0.3				PE	PE	PE	0
AN1649	BANDO 4597	-0.1	0.9	0.2	0.5	0.6	-0.6	0.6	0.8	0.3	1.1	PE	PE	PE	0
AN1650	DAYBREAK	-0.2	0.6	0.1	0.3	-0.4	-0.1	0.5	1.0	0.8	0.3	PE	PE	PE	1
AN1651	RITO 4L41	-0.4	0.0	-0.2	-0.8	0.2	-0.3	-1.1				PE	PE	PE	0
AN1653	MAINLINE	-0.2	0.7	-0.4	0.2	0.2	-0.5	0.4				PE	PE	PE	1
AN1654	CURVE BENDER	-0.1	-0.6	0.7	-0.4	0.7	-0.5	-0.3				PE	PE	PE	0
AN1656	GREATPLAINS 9520	-0.7	0.6	1.5	-0.8	0.8	-0.1	0.4	2.5	2.4	1.5	13	13	12	1
AN1663	ON TRACK	-0.1	-0.1	0.8	0.1	0.7	0.2	-0.2				PE	PE	PE	0
AN1672	HINDSIGHT	-0.7	-0.3	0.6	-1.0	0.7	-0.6	0.9	0.8	0.1	0.7	PE	PE	PE	0
AN1673	CONTRAST	-0.4	0.2	0.0	-0.4	0.1	-0.9	0.0				PE	PE	PE	0
AN1674	EXCELLENCY	-0.6	0.6	0.8	0.1	1.0	-0.2	0.4	2.4	1.6	2.4	PE	PE	PE	0
AN1675	IN LINE	-0.4	-0.4	0.1	-0.8	0.3	-0.6	0.5	0.4	-0.1	0.7	PE	PE	PE	0
AN1677	PROTEGE	-0.5	-0.3	0.9	-0.8	0.7	-1.0	0.5				PE	PE	PE	0
AN1679	NEW DESIGN 458N	-0.3	-0.5	0.3	-0.4	-0.1	0.0	-0.1	0.8	0.7	0.3	PE	PE	PE	1
AN1683	IDEAL 3542	-0.2	0.4	1.2	-0.1	0.4	1.8	-1.2	0.1	0.1	0.1	PE	PE	PE	0
AN1684	OVERTIME	0.0	0.0	1.0	-0.3	0.9	-0.5	0.4	0.5	0.5	0.8	PE	PE	PE	0
AN1687	ADVANTAGE PLUS	-0.3	0.5	0.1	0.3	-0.1	0.5	-0.2	1.0	0.6	0.8	PE	PE	PE	0
AN1689	BLUEPRINT	-0.5	0.3	-0.1	-0.4	0.8	-0.3	0.2				PE	PE	PE	0
AN1694	FULL FREIGHT	-0.7	-0.5	0.6	-0.5	0.7	0.0	0.0	0.3	0.2	0.4	PE	PE	PE	0
AN1695	RITO LEGACY	-1.5	-0.8	1.5	-0.4	1.9	0.5	-0.6	-0.5	-1.0	0.3	PE	PE	PE	0
AN1698	GRAND CANYON	-0.6	-1.4	1.5	-0.9	0.7	-0.6	0.6				PE	PE	PE	0
AN1700	RITO 2B94	-0.5	-0.2	0.3	-0.3	0.4	1.2	-1.1	1.3	0.3	1.0	PE	PE	PE	0
AN1701	GARDENS WAVE	-0.5	0.6	0.0	0.2	0.1	-0.1	0.4				PE	PE	PE	1
AN1703	RAINMAKER 9723	-0.1	-0.5	1.0	-0.6	0.1	-0.5	0.2				PE	PE	PE	1
237AN1673	BOYD ON TARGET	-0.3	0.2	1.3	-0.1	1.1	0.4	0.0	1.0	0.7	0.8	68	38	16	5
237AN1680	DIRECTIVE	0.2	0.9	0.3	0.1	0.6	-0.1	0.2	0.4	0.1	0.5	25	25	PE	2
237AN1749	MIDLAND EMPIRE	-0.3	0.5	0.4	0.0	0.1	1.0	-0.6				PE	PE	PE	0
237AN1777	CONNECTION	0.3	1.0	0.7	0.8	-0.1	0.4	0.3	0.7	0.3	0.3	13	13	PE	3
237AN1779	MILE HIGH	-0.3	-0.4	-0.1	-0.6	-0.3	-0.1	0.0	0.2	0.3	0.0	PE	PE	PE	2
237AN1810	FRANCHISE	-0.5	0.0	-0.7	-0.4	0.4	-0.4	0.4	0.2	0.2	0.6	14	7	PE	1
237AN1847	CORONA	-0.4	-1.0	0.5	-0.7	0.9	-0.2	0.3	0.2	0.3	0.0	14	14	PE	2
237AN1896	RITO 2A63	-0.9	0.5	0.1	-0.7	0.2	0.5	-0.6	1.0	0.6	1.5	PE	PE	PE	0
237AN1904	BULLSEYE	-0.2	0.6	0.6	0.0	0.7	0.1	0.0	1.3	0.4	0.8	PE	PE	PE	0
237AN1978	FORWARD	-0.1	-0.1	0.8	-0.2	0.7	-0.1	0.7				PE	PE	PE	0

**Fall 2007 GTS**  
**ABS Angus Sires**  
**Top Sires Body and Udder Traits**



**Top 15 ABS Sires for Capacity**  
with progeny evaluated

NAAB Code	NAME	STA	Prog	Herds
AN1639	OPEN RANGE	+3.5	21	2
AN1640	IN FOCUS	+2.6	111	16
AN1623	ALLIANCE I87	+2.5	87	6
AN1519	PLOWMAN	+2.2	131	17
AN1558	RELIANT	+1.8	43	4
AN1596	IDEAL 7451	+1.8	101	6
AN1561	LOAD UP	+1.8	24	6
AN1501	602C	+1.6	427	32
AN1569	BANDWIDTH	+1.6	37	3
AN1656	GREATPLAINS 9520	+1.5	13	1
AN1608	ANALYST	+1.3	30	1
237AN1673	BOYD ON TARGET	+1.3	68	5
AN1574	OBJECTIVE	+1.2	85	9
AN1589	FORESIGHT	+1.2	132	9
AN1633	SHEAR FORCE	+1.1	31	5

**Top 15 ABS Sires for Muscling**  
with progeny evaluated

NAAB Code	NAME	STA	Prog	Herds
AN1519	PLOWMAN	+2.6	131	17
AN1623	ALLIANCE I87	+2.3	87	6
AN1478	SAUGAHATCHEE	+1.8	147	17
AN1633	SHEAR FORCE	+1.7	31	5
AN1569	BANDWIDTH	+1.7	37	3
AN1501	602C	+1.4	427	32
AN1561	LOAD UP	+1.3	24	6
AN1641	PRECISION 1023	+1.3	48	4
AN1640	IN FOCUS	+1.2	111	16
237AN1673	BOYD ON TARGET	+1.1	68	5
AN1567	MODERN DESIGN	+1.1	43	4
AN1589	FORESIGHT	+1.1	132	9
AN1619	MORGANS DIRECTION	+1.0	77	5
AN1556	LEAD ON	+1.0	173	29
AN1608	ANALYST	+1.0	30	1

**Top 15 ABS Sires for Feet & Pasterns**  
with progeny evaluated

NAAB Code	NAME	STA	Prog	Herds
AN1569	BANDWIDTH	+2.4	37	3
AN1627	CONNECTION X15	+2.0	15	1
AN1625	SAFE LEAD	+1.7	19	2
AN1589	FORESIGHT	+1.6	132	9
AN1633	SHEAR FORCE	+1.4	31	5
AN1574	OBJECTIVE	+1.3	85	9
AN1642	IMAGE MAKER	+1.2	77	7
AN1634	INNOVATOR	+1.2	13	2
AN1478	SAUGAHATCHEE	+1.0	147	17
AN1640	IN FOCUS	+1.0	111	16
AN1519	PLOWMAN	+1.0	131	17
AN1532	EXT 4137	+1.0	51	3
AN1587	EXACTLY 1912	+0.9	48	6
AN1621	COALITION	+0.7	60	10
AN1556	LEAD ON	+0.7	173	29

**Fall 2007 GTS**  
**ABS Angus Sires**  
**Top Sires Body and Udder Traits**



**Top 15 ABS Sires for Udder Attachment**  
with progeny evaluated

NAAB Code	NAME	STA	Prog	Herds
AN1656	GREATPLAINS 9520	+2.5	12	1
AN1478	SAUGAHATCHEE	+2.0	19	17
AN1593	NEW DESIGN 9150	+1.7	23	7
AN1501	602C	+1.7	119	32
AN1577	EXTRA H6	+1.5	47	8
AN1524	TRAVELER 234D	+1.2	60	31
AN1520	N BAR PRIME TIME	+1.1	14	7
237AN1673	BOYD ON TARGET	+1.0	16	5
AN1532	EXT 4137	+0.8	32	3
AN1616	NEW LEVEL	+0.8	40	19
AN1644	EXTRA K205	+0.7	14	4
AN1589	FORESIGHT	+0.7	13	9
AN1519	PLOWMAN	+0.4	16	17
AN1556	LEAD ON	+0.4	38	29
AN1642	IMAGE MAKER	+0.4	22	7

**Top 15 ABS Sires for Udder Depth**  
with progeny evaluated

NAAB Code	NAME	STA	Prog	Herds
AN1656	GREATPLAINS 9520	+2.4	12	1
AN1520	N BAR PRIME TIME	+1.7	14	7
AN1593	NEW DESIGN 9150	+1.5	23	7
AN1556	LEAD ON	+1.5	38	29
AN1478	SAUGAHATCHEE	+1.4	19	17
AN1501	602C	+1.4	119	32
AN1577	EXTRA H6	+1.2	47	8
237AN1673	BOYD ON TARGET	+0.7	16	5
AN1523	NEW DESIGN 878	+0.6	85	41
AN1644	EXTRA K205	+0.6	14	4
AN1524	TRAVELER 234D	+0.6	60	31
AN1616	NEW LEVEL	+0.0	40	19
AN1551	DESTINATION 928	-0.0	15	13
AN1596	IDEAL 7451	-0.0	31	6
AN1519	PLOWMAN	-0.1	16	17

**Top 15 ABS Sires for Teat Size**  
with progeny evaluated

NAAB Code	NAME	STA	Prog	Herds
AN1577	EXTRA H6	+2.6	47	8
AN1520	N BAR PRIME TIME	+2.5	14	7
AN1478	SAUGAHATCHEE	+2.2	19	17
AN1501	602C	+1.9	119	32
AN1532	EXT 4137	+1.8	32	3
AN1656	GREATPLAINS 9520	+1.5	12	1
AN1593	NEW DESIGN 9150	+1.3	23	7
AN1644	EXTRA K205	+1.3	14	4
AN1589	FORESIGHT	+1.0	13	9
AN1556	LEAD ON	+1.0	38	29
AN1642	IMAGE MAKER	+0.8	22	7
237AN1673	BOYD ON TARGET	+0.8	16	5
AN1618	PRIME CUT 0145	+0.7	11	7
AN1524	TRAVELER 234D	+0.5	60	31
AN1596	IDEAL 7451	+0.3	31	6

**Top 15 ABS Sires for Udder Composite**  
with progeny evaluated

NAAB Code	NAME	Udder Attach	Udder Depth	Teat Size	Udder Composite	Prog Udder	Herds
AN1656	GREATPLAINS 9520	+2.5	+2.4	+1.5	+2.1	12	1
AN1478	SAUGAHATCHEE	+2.0	+1.4	+2.2	+1.9	19	17
AN1520	N BAR PRIME TIME	+1.1	+1.7	+2.5	+1.8	14	7
AN1577	EXTRA H6	+1.5	+1.2	+2.6	+1.7	47	8
AN1501	602C	+1.7	+1.4	+1.9	+1.7	119	32
AN1593	NEW DESIGN 9150	+1.7	+1.5	+1.3	+1.5	23	7
AN1556	LEAD ON	+0.4	+1.5	+1.0	+0.9	38	29
AN1644	EXTRA K205	+0.7	+0.6	+1.3	+0.8	14	4
237AN1673	BOYD ON TARGET	+1.0	+0.7	+0.8	+0.8	16	5
AN1524	TRAVELER 234D	+1.2	+0.6	+0.5	+0.7	60	31
AN1532	EXT 4137	+0.8	-0.7	+1.8	+0.6	32	3
AN1589	FORESIGHT	+0.7	-0.2	+1.0	+0.5	13	9
AN1642	IMAGE MAKER	+0.4	-0.4	+0.8	+0.3	22	7
AN1523	NEW DESIGN 878	+0.2	+0.6	-0.0	+0.2	85	41
AN1618	PRIME CUT 0145	-0.1	-0.1	+0.7	+0.2	11	7

Fall 2007 GTS  
 Angus Sires for Reference  
 > 200 Progeny Evaluated



Animal Reg Name	Stature	Feminity	Capacity	Body Length	Muscling	Rear Legs	Feet & Pasterns	Udder Attach	Udder Depth	Teat Size	Prog Body	Prog Fem	Prog Udder	Herds
<b>4S PONDEROSA</b>	+1.2	+2.1	-0.5	+1.4	+0.5	+0.6	+0.2	-1.3	+0.2	-1.1	253	249	193	79
<b>A A R NEW TREND</b>	-0.3	+1.3	-0.6	+0.1	-1.3	+1.5	-2.7	+2.1	+0.9	+0.1	1097	1029	603	140
<b>B/R NEW DESIGN 036</b>	+0.6	-0.1	-0.3	+0.8	+0.1	-0.6	+0.0	+1.4	+1.2	+1.1	337	211	122	41
<b>BALDRIDGE OSCAR</b>	+0.9	-0.9	+1.5	+0.8	+1.2	+1.0	-0.6	+1.1	+0.4	+0.2	303	287	220	64
<b>BASIN EMULATION 5653</b>	-1.2	+1.4	-0.5	-1.9	-1.6	+1.7	-2.1	-0.5	-0.4	-0.1	523	339	159	16
<b>BASIN MAX 602C</b>	+0.0	-2.2	+1.6	-1.1	+1.4	-0.1	+0.5	+1.7	+1.4	+1.9	427	179	119	32
BON VIEW BANDO 598	-0.1	+1.6	+0.1	+0.4	+0.2	+0.4	+1.1	+1.1	-0.0	+0.9	357	206	46	52
<b>BON VIEW NEW DESIGN 1407</b>	-0.2	-0.9	+0.0	-0.8	-0.8	+0.0	-0.2	+0.6	+0.9	-0.4	241	93	32	38
<b>BON VIEW NEW DESIGN 878</b>	+0.2	-0.4	+0.1	-0.1	+0.8	-1.2	+0.3	+0.2	+0.6	-0.0	310	158	85	41
BROST POWER DRIVE	+2.5	+0.5	-0.6	+2.4	-0.6	+0.1	+0.2	+0.2	+1.7	+0.7	201	187	123	71
CONNEALY DATELINE	-0.6	-0.1	+0.7	-0.1	+0.7	+0.5	+0.2	+1.0	+1.2	+1.1	215	92	38	24
D H D TRAVELER 6807	-1.3	-0.2	+2.1	-1.2	+2.1	-0.7	+0.3	+2.5	+1.8	+1.9	723	514	190	110
<b>EMULATION N BAR 5522</b>	-1.3	-1.0	+0.9	-0.0	+1.3	-0.0	-0.1	+3.0	+2.1	+3.6	523	460	237	59
G A R SLEEP EASY 1009	-0.5	+0.7	+0.2	-0.7	-0.5	-1.0	+0.6	+0.3	+0.0	+0.2	239	161	50	67
<b>G D A R EQUALIZER 6148</b>	+0.7	+1.0	-0.9	+0.5	-2.3	+1.0	-1.9	+3.0	+1.5	+0.7	378	312	137	69
G D A R EXECUTIVE 727	+0.1	+0.0	+0.2	-0.6	+0.6	+0.1	+0.0	+0.6	+0.1	-0.6	286	243	102	63
G D A R OSCAR 711	+0.3	-0.7	+0.4	-0.5	+1.1	+0.0	+0.9	+1.4	+1.0	+2.1	248	184	48	54
<b>G D A R RAINMAKER 340</b>	-0.3	+2.0	-1.1	-0.8	-1.3	-0.4	+0.7	+2.2	+1.3	+1.1	715	502	275	102
<b>G D A R RITO 596 L T</b>	-0.2	+0.9	+0.5	-0.4	+1.4	-0.9	+1.9	+1.9	+1.3	+1.1	455	381	164	100
<b>G D A R TRAVELER 71</b>	-0.6	+1.7	+0.3	+0.1	-0.1	+0.0	+0.1	+1.4	+0.4	+0.4	479	326	133	84
<b>G T MAXIMUM</b>	+0.9	-2.5	+2.6	+0.8	+2.3	+0.0	+0.5	-0.3	+0.3	+0.4	1199	690	203	118
<b>HOFF HI FLYER S C 7134</b>	+1.6	+0.4	-0.2	+2.1	-0.2	+0.8	-0.7	-0.7	+0.2	-1.6	309	228	71	57
<b>HOFF HI HAND S C 654</b>	+1.5	-1.6	+1.1	+1.7	+0.7	+1.6	-0.8	-1.7	-1.5	-0.1	380	293	89	90
HOFF HI SPADE S C 491	+1.9	-0.6	+0.6	+1.7	-0.0	+1.3	-1.0	-1.0	+0.4	+0.2	495	376	191	112
<b>HOFF NORTHLANDER S C 6029</b>	+1.5	+1.4	-0.5	+1.8	-0.0	-1.1	+0.7	+1.0	+1.1	-0.1	363	306	108	79
<b>HOFF VALEDICTORIAN S C 925</b>	+1.6	-0.7	+0.9	+0.8	+0.5	-0.3	+0.2	+0.5	+0.7	-0.9	418	364	177	87
<b>LEACHMAN CONVEYOR</b>	-1.1	+1.2	+0.5	-1.3	-0.0	-0.7	+0.2	+2.9	+2.0	+2.5	239	115	12	13
<b>LEACHMAN HOSS</b>	+1.7	+1.6	-0.4	+1.8	+0.6	-0.6	+1.1	-0.6	+1.5	+0.1	227	211	93	54
LEACHMAN PROMPTER	+1.9	-0.2	-0.5	+1.4	-0.2	-0.2	-0.6	-0.8	+1.4	+0.3	285	243	114	71
LEACHMAN RIGHT TIME	-0.4	+1.0	+0.5	-0.1	+0.6	+1.7	-0.6	+2.3	+1.7	+3.3	370	154	75	46
LEACHMAN TONTO	-0.0	-0.9	-0.5	-0.6	-0.2	-0.5	+1.1	+0.5	+0.3	-1.8	429	334	142	72
<b>MED ROCK TRAVELER JR</b>	-1.1	+1.1	+0.7	-1.1	+0.7	+0.1	-1.6	+1.2	+0.1	+1.6	263	83	51	8
<b>MINERTS FORTUNE 2000</b>	+0.5	+1.0	+1.2	+0.1	+0.3	-0.1	+1.3	+1.0	+0.7	+0.3	270	195	44	49
<b>N BAR EMULATION EXT</b>	-0.6	+1.3	+0.7	+0.8	+0.9	-0.1	+0.7	+3.5	+2.2	+3.9	1268	804	260	148
P S POWER PLAY	+0.9	+0.3	+1.2	+0.6	+0.9	+0.7	+0.2	-1.7	-0.3	-0.0	447	435	381	111
PARAMONT AMBUSH 2172	-0.7	-0.3	+0.2	-0.4	+0.6	+1.3	-1.6	+1.0	-0.1	+1.5	244	176	81	52
PINE DRIVE BIG SKY	+1.6	+0.3	-0.1	+1.3	+0.3	+0.2	-0.1	-1.2	-0.0	-1.3	758	707	517	158
<b>Q A S TRAVELER 23-4</b>	-0.8	+0.8	-0.1	-0.9	+0.8	-0.5	+0.6	+1.8	+0.6	+0.8	2376	1976	1167	281
R R TRAVELER 5204	-0.3	+0.9	+0.1	-0.3	-0.7	-0.8	+0.2	+3.1	+1.1	+2.7	279	207	87	73
<b>R&amp;J MAXIMA</b>	+1.2	-0.2	-0.1	+1.0	+0.5	+0.3	+0.7	-1.7	+1.1	+0.4	252	206	77	69
RAMBO 465T OF J R S	+0.7	+1.3	-1.3	+0.5	-1.2	+0.8	-0.2	-0.4	+0.4	-0.6	287	187	78	23
<b>RITO 2100 G D A R</b>	+0.6	+0.2	+1.1	+0.3	+0.2	-0.6	+1.5	+1.2	+0.1	-1.4	1494	1275	658	206
<b>RITO 8E8 OF 5H11 TRAVELER</b>	-0.8	-2.0	+0.9	-0.3	+1.5	+1.2	-0.3	-0.5	-0.3	+0.3	361	295	100	64
RITO 9J9 OF B156 7T26	-0.8	-0.7	+0.7	-0.6	+2.1	-3.9	+2.3	-0.1	-0.6	+0.2	276	262	145	49
<b>ROCKN D AMBUSH 1531</b>	-0.5	+0.6	-0.7	-0.9	+0.3	+0.1	+0.5	-0.3	-0.3	+0.4	203	133	67	24
<b>S A F FAME</b>	+0.1	+0.6	+0.3	+0.0	+0.5	-0.5	+1.3	+0.8	+1.4	+0.4	271	121	34	28
<b>S A F POWER FIX</b>	+0.8	+0.7	-1.7	+1.5	-0.8	-0.4	+1.0	+0.3	+1.4	+0.2	318	230	72	63
SCHEARBROOK SHOSHONE	-2.1	+1.0	+1.0	-1.5	-0.6	+1.3	-4.8	-2.7	-4.0	-2.8	219	216	197	46
SCOTCH CAP	+0.1	-0.4	+1.0	-0.5	+0.9	+1.3	-0.4	-0.9	+0.5	-0.9	1067	965	469	159
SITZ ALLIANCE 6595	+0.0	-1.5	+1.4	-1.4	+0.6	-1.5	+0.8	+2.0	+0.7	+1.7	229	111	34	42
<b>SITZ TRAVELER 8180</b>	-0.5	-0.1	+1.2	-0.3	+0.0	+0.4	-0.8	+2.2	+0.8	+1.5	200	102	35	29
TC DIVIDEND 963	+0.7	+1.2	-1.4	+1.0	-0.8	-0.3	-0.7	+1.5	+1.9	+3.5	327	244	69	65
<b>TC RANCHER 056</b>	-0.1	+0.5	-0.4	-0.6	+0.2	+0.2	-0.1	+0.2	+0.3	-0.2	200	111	50	17
TC STOCKMAN 365	+0.6	-0.3	-1.0	+0.9	+0.6	-0.1	-0.5	-0.8	+0.2	-0.6	353	175	51	31
TEHAMA BANDO 155	-0.8	-0.4	+0.6	-0.7	+0.8	-0.2	+0.1	+2.3	+0.8	+1.3	860	721	319	126
<b>V D A R NEW TREND 315</b>	+1.0	+1.5	-0.5	+0.8	-0.2	-0.4	+1.5	-0.2	+0.4	+0.4	426	313	91	94
<b>V D A R TRAVELER 722</b>	-1.0	+2.5	+1.3	-1.0	-0.3	-0.6	+1.0	+2.2	+1.5	+1.2	300	217	17	49
<b>VANCE TOP DAWG</b>	+0.0	-0.8	+0.2	+1.4	-0.1	+0.9	-2.4	+0.5	+0.1	+1.0	228	219	174	65
<b>WOODHILL TRIPLE THREAT</b>	+0.2	-1.0	-0.1	+0.7	-0.1	+1.6	-1.3	+1.6	+1.6	-1.1	211	158	42	48